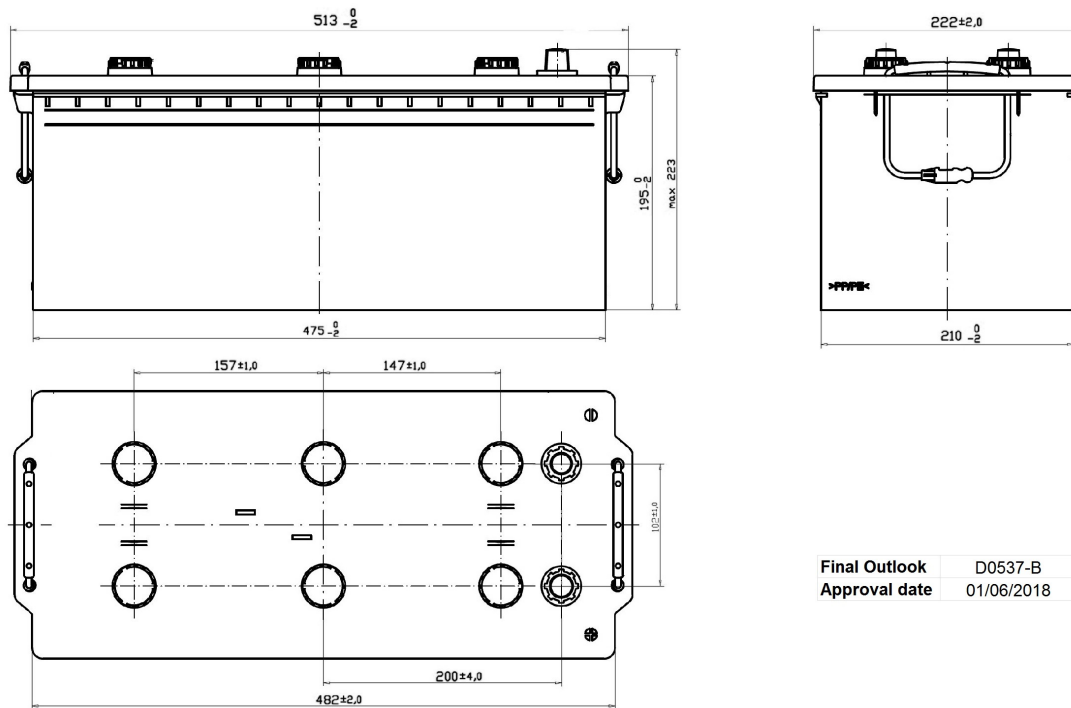


Central Article Code: D05104W37-B
 Local Code:

Created: 29/05/2018
 Modified: 31/07/2020



| PERFORMANCES | | CONTAINER | |
|------------------|----------------|-------------------|---------------------------------|
| Voltage (V): | 12 V | Type: | D05 BLACK |
| C20 (Ah): | 180.0 20 h | Hold Down: | B0 |
| Cranking (A): | 1000 EN | H.D. Adapter: | No |
| Charge: | WET | COVER | |
| Technology: | Vented/Flooded | Type: | Flat/Screw BLACK |
| Grid: | Hybrid | Polarity: | ETN 3 |
| | | Terminals: | EN taper post |
| | | Terminal Adapter: | No |
| | | SOCI: | No |
| | | Ventilation: | Independent |
| | | Filter: | No |
| | | Lateral Plug: | No |
| STD. DIMENSIONS | | PLUGS | |
| Length (mm ± 2): | 513 | Type: | 6 x M27 (STS Small cover) BLACK |
| Width (mm ± 2): | 223 | HANDLES | |
| Height (mm ± 2): | 223 | Type: | 2 x Rope (Rigid holder) BLACK |
| | | OTHERS | |
| | | Degassing Tube: | No |

All figures show nominal values. Tolerances are according to EN50342 and applicable European Regulations.